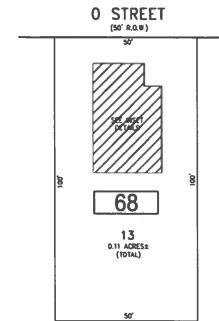
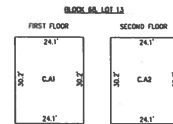


REVISIONS		
DATE	NAME	NO.

**NOTE:**  
THIS SHEET HAS BEEN DRAWN USING COMPUTER AIDED DRAFTING/DESIGN  
(CAD/D) AND COORDINATE GEOMETRY (COORD).



**PLAN**  
SCALE: 1"=25'



**DETAILS**  
SCALE: 1"=25'

BLOCK NUMBER	LOT NUMBER	CONDO QUALIFIER	SQUARE FOOTAGE
68	13	C.A1	875 SF
68	13	C.A2	875 SF

**BLOCK 68, LOT 13**  
**65 O STREET CONDOMINIUM**

BLOCK 68, LOT 13  
SEE SHEET 13

**TAX MAP**  
**BOROUGH OF SEASIDE PARK**  
OCEAN COUNTY NEW JERSEY  
SCALE: NOTED DATE: 11-29-2013  
CHARLES E. ADAMSON N.J.P.L.S. LIC. NO. 42627  
**REMINGTON & VERNICK ENGINEERS**  
8 ALLEN STREET, TONAS RIVER, NJ 08753  
(732) 760-9120, FAX: (732) 560-4410, WEB SITE ADDRESS: WWW.RVE.COM  
Certificate of Authorization: 24 GA 28003300  
Excellence • Innovation • Service